

www.kaytsvalve.com

www.kaytsvalve.com



The Professional
Flow Control Solution
Expert



Optical Emission Spectroscopy (OES)



Coordinate Measuring Machine (CMM)



Machining Center



CNC Drilling Machine

Company Introduction

Sichuan Kayts Valve Mfg. Co., Ltd, mainly engages in producing ball valve and is the first company moved to the Bancang Industrial Area located in Zigong. The company holds the principle of “customer first, excellent quality, advanced technology and standard management” and the idea of “market is the core; quality is the basis; innovation is the driving force.”

The company is fostering a team of professional research, marketing and manufacturing. Also, the company adopts CAD, CAPP software and other advanced domestic and international valve designing technologies. We have other advanced manufacturing equipments like CNC (computer numerical control), diving pre-pressurize, the automatic specialized paint drenches spreads the production line, etc.

We carry out the producing standards like GB, JB, JIS, API, DIN, EN, etc., promote ERP systematic management and form a product line which is based on the ball valves but including the manufacturing of axial flow check valve, pig valve, gate valve, globe valve and check valve.

The company covers the land of 45 mus, of which the building area is 20,000 square meters and the annually designing capability is 10,000 tons. The valve produced by us is characterized as follow: more than 1000 specifications, DN 15—1300mm, PN 1.6—42.0MPa, class 150—2500 LB.

The company is committed to the principle of “advanced technology, excellent quality, perfect service and to satisfy customer”, adhere to the idea that technological is the core competition power and take the standardization, technicalization and internationalization as the guide. We have been certified by ISO9001 (ABSQE), API16D, API Q1, API607, API 6FA, CE (TUV) as well as national special equipment manufacturing permission.

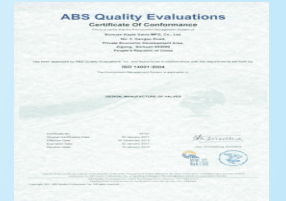
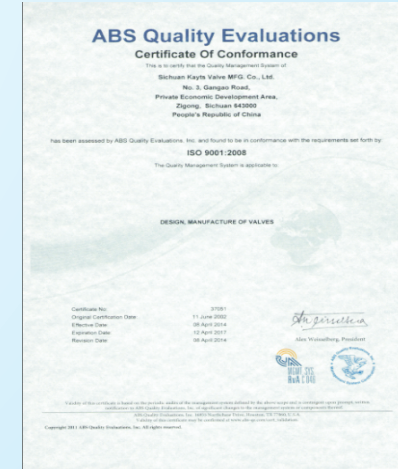
Kayts is granted as the title of “Famous Trademark of Sichuan Province” and the products “Famous Products of Sichuan Province”. We are the supplier of ball valves for some large-size national petroleum enterprises like China Petroleum, Sinopec Group. We have also established good cooperative relationship with the partum and natural gas companies in Malaysia, Bangladesh, Pakistan, Kuwait etc. We have provided a great deal of ball valves for Huade oil depot in Guangdong province, Chang Wuling gas transport program, gas transport and the reconstruction of gas pipe net in Bangladesh, the oil well pipe project in Canada, the project of ethylene handling at low temperature in American fuel service company.

The export volume accounts for 60% of the total sales volume of the company; the company has established close cooperative relationship with more than 20 countries around the world like UK, US, France and Italy.

KAYTS enjoys a fine reputation in lines of business like natural gas, pipe transport, metallurgy and electricity and in the North America, EU, Middle East, South Asia as well as Middle Asia.

Certification & Approvals

- API 6D
- API 6FA
- API 607
- API Q1
- ISO 9001
- ISO 14001
- OHSAS 18001



How To Specify Kayts Ball Valve Model Number

10	RF	G	TB1	A01	F	11	C	E150
A	B	C	D	E	F	G	H	I

A	Valve Size and Unit: Inch for API valves,mm for GB valves.
B	End Connection: RF-Raised face, FF-Flat face, RTJ-Ring joint face, FM-Female face, M-Male face, T-Tongue face, G-Groove face, WF-Wafer, BW-Butt weld, SW-Socket weld, TH-Thread(Usually considering as NPT, unless other threads are specified), O-Other connection type should be specified in the order
C	Operation: Blank-Lever, N-Bare system, E-Electric actuated, P-Pneumatic actuated(double action), PS-Pneumatic actuated(Spring return) 、H-Hydraulic, G-Gearbox, PH-Gas over oil, PHS-Gas over oil with emergency shut-off
D	Construction Type: FB1-bolted full bore floating ball valve, FB2-bolted reduced bore floating ball valve, FB3-fully welded full bore floating ball valve, FB4-fully welded reduced bore floating ball valve, TB1-bolted full bore trunnion mounted ball valve, TB2-bolted reduced bore trunnion mounted ball valve, TB3-fully welded full bore trunnion mounted ball valve, TB4-fully welded reduced bore trunnion mounted ball valve, TFB1-full bore top entry floating ball valve, TFB2-reduced bore top entry floating ball valve, TTB1-full bore top entry trunnion mounted ball valve, TTB2-reduced bore top entry trunnion mounted ball valve, TVB-V type 3 way trunnion mounted ball valve, FL-L type 3 way floating ball valve, TL-L type 3 way trunnion mounted ball valve, FT-T type 3 way floating ball valve, TT-T type 3 way trunnion mounted ball valve, FY-Y type 3 way floating ball valve, TY-Y type 3 way trunnion mounted ball valve, JB-Jacket ball valve, SB-Union ball valve
E	Rating & Flange Standards: (1)ANSI B16.5:A01-150Lb, A03-300Lb, A04-400Lb, A06-600Lb, A08-800Lb (F-NPT, SW AND BW), A09-900Lb, A15-1500Lb, A25-2500Lb; (2)JB/T79:J01-1.6MPa, J02-2.5MPa, J04-4.0MPa, J06-6.4MPa, J10-10.0MPa, J16-16.0MPa, J25-25.0MPa; (3)GB9115:G01-1.6MPa, G02-2.5MPa, G04-4.0MPa, G06-6.4MPa, G10-10.0MPa, G16-16.0MPa, G25-25.0MPa; (4)HG20592:HE01-1.6MPa, HE02-2.5MPa, HE04-4.0MPa, HE06-6.4MPa, HE10-10.0MPa, HE16-16.0MPa HE25-25.0MPa (5)HG20615:HM02-2.0MPa, HM05-5.0MPa, HM06-6.8MPa, HM11-11.0MPa HM16-16.0MPa HM26-26.0MPa 、HM42-42.0MPa

How To Specify Kayts Ball Valve Model Number

F	Seat Material: F-PTFE, H-R.PTFE, P-PPL, N-Nylon, E-PEEK, M-Alloy Steel Metal Seat, Y-STL Overlay or Tungsten Carbide Coated, G-Carbon Fiber, X-NBR, T-Viton
G	Body and Trim: 11:WCB body,A105 trim, 21:CF8 body, F304 trim, 31:CF8M body, F316 trim, 41:CF3 body, F304L trim, 51:CF3M body, F316L trim, 61:WC6 body, F1 trim, 71:WC9 body, F22 trim, 81 : C5 body, F5 trim, 91:LCB body, LF2 trim, 12:WCB body, F304 trim, 13:WCB body, 3F16 trim
H	Body Material Type:C-Cast, F-Forged
I	Others: E100, E means stem extension, 100 means the dimension from the valve center line to the top flange of the extended stem, and the unit is cm; Nc means anti-sulphur, and D means low temperature

For example:

10"RFGTB1A01F11CE150 means 10" RF ends, gearbox operated, full bore, trunnion mounted ball valve, ANSI 150#, PTFE seat, WCB body, A105 trim, stem extension 1500 mm.

Product Range

Pressure Size	Class150		Class300		Class400		Class600		Class900		Class1500		Class2500	
	Trunnion	Floating	Trunnion	Floating	Trunnion	Floating	Trunnion	Floating	Trunnion	Floating	Trunnion	Floating	Trunnion	Floating
1/2"		△		△		△		△		△		△		△
3/4"		△	△	△	△	△	△	△	△	△	△	△	△	△
1"		△	△	△	△	△	△	△	△	△	△	△	△	△
1-1/2"	△	△	△	△	△	△	△	△	△	△	△	△	△	△
2"	△	△	△	△	△	△	△	△	△	△	△	△	△	△
3"	△	△	△	△	△	△	△	△	△	△	△	△	△	△
4"	△	△	△	△	△	△	△	△	△	△	△	△	△	△
5"	△	△	△	△	△	△	△	△	△	△	△	△	△	△
6"	△	△	△	△	△	△	△	△	△	△	△	△	△	△
8"	△	△	△	△	△	△	△	△	△	△	△	△	△	△
10"	△	△	△	△	△	△	△	△	△	△	△	△	△	△
12"	△	△	△	△	△	△	△	△	△	△	△	△	△	△
14"	△	△	△	△	△	△	△	△	△	△	△	△	△	△
16"	△	△	△	△	△	△	△	△	△	△	△	△	△	△
18"	△	△	△	△	△	△	△	△	△	△	△	△	△	△
20"	△	△	△	△	△	△	△	△	△	△	△	△	△	△
22"	△	△	△	△	△	△	△	△	△	△	△	△	△	△
24"	△	△	△	△	△	△	△	△	△	△	△	△	△	△
26"~56"	△	△	△	△	△	△	△	△	△	△	△	△	△	△

Note:

- △ Means the size complies with the valve type.
- The above chart shows the API product range, and the GB product range is same as the API product range.
- When both floating and trunnion mounted type are available, please consult KAYTS sales representative.

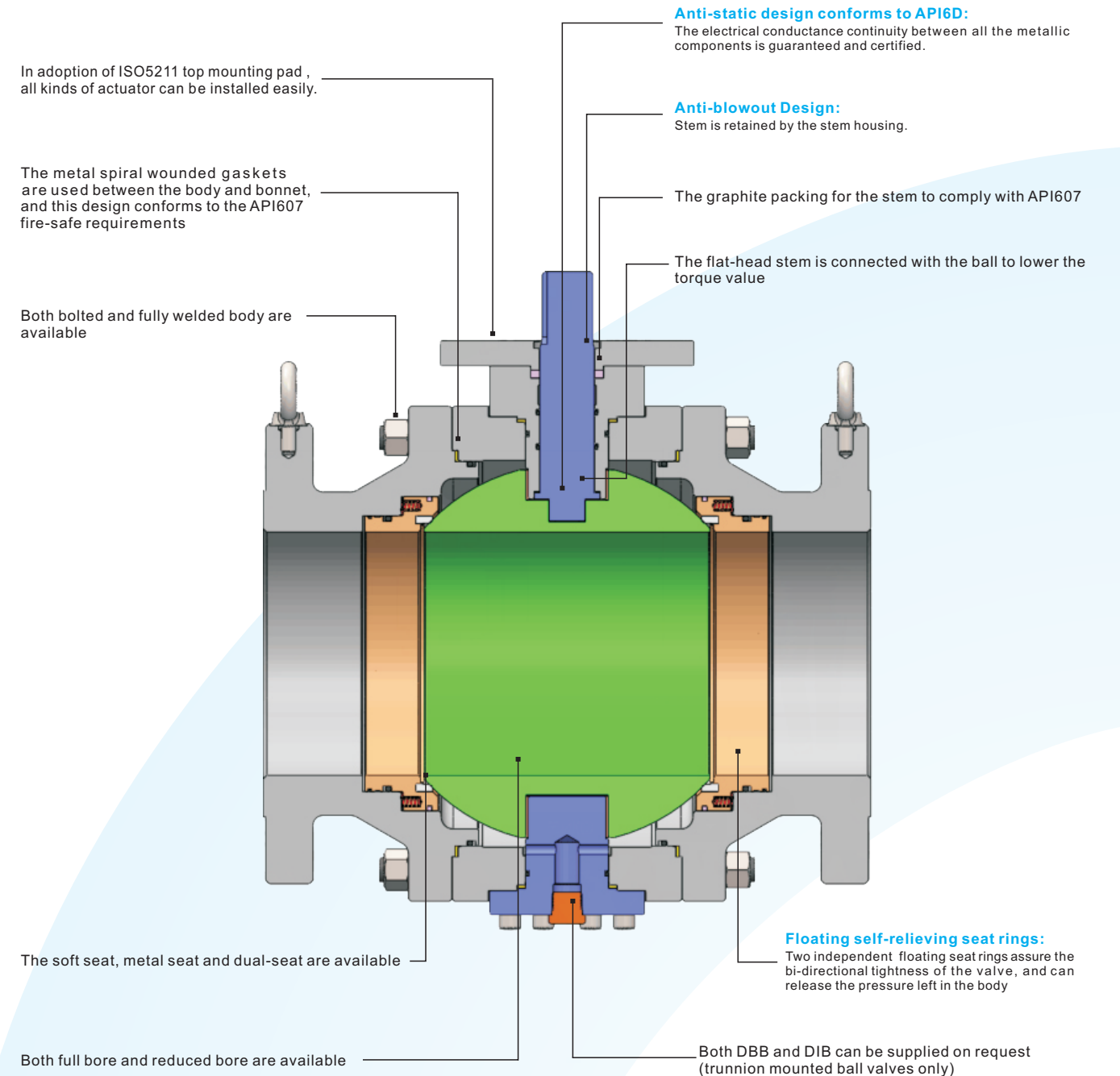
Design, Manufacturing and Testing Standard

	API Series	GB Series
Design	API 6D	GB/T12237
Face to Face	ASME B16.10	GB/T12221
MOP	ASME B16.34	GB/T9131
Flanged Ends	ASME B16.5/ASME B16.47	JB, HG, GB
Welded Ends	ASME B16.25	GB/T12224
Testing	API 6D	JB/T9092, GB/T13927

Note:

- Please consult the factory.
- The above specification is KAYTS's basic design, manufacturing and testing standards. KAYTS also can do it on customer requests.
- Valve ends can be manufactured to special configurations to comply with customer requests.

Trunnion Mounted Ball Valve



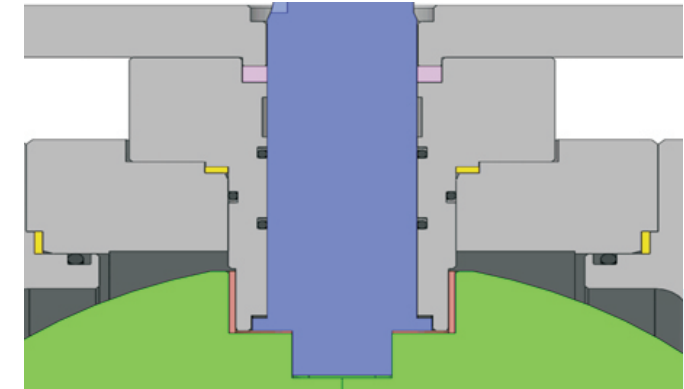
Trunnion Mounted Ball Valve Technical and Function Configuration Sheet

Item	Bolted Body	Fully Welded Body	Top Entry Body
Independent ball and stem	Standard	Standard	Standard
Independent floating seat ring	Standard	Standard	Standard
Soft seats with firesafe metal lip	Standard	Standard	Standard
Metal seats	On request	On request (NPS 6" and larger)	On Request(NPS6" and larger)
Dual seated (soft seats+metal seats)	On request	On request	On Request
Upstream sealing (with DBB)	Standard	Standard	Standard
Both upstream and downstream sealing(with DIB)	On request	On request	On Request
Automatic cavity relief	Standard	Standard	Standard
Seat greaser fitting	Standard (NPS6" and larger)	Standard (NPS6" and larger)	Standard (NPS6" and larger)
Stem greaser fitting	Standard (NPS4" and larger)	Standard (NPS4" and larger)	Standard (NPS6" and larger)
Blow out- proof stem	Standard	Standard	Standard
Fire safe design	Standard	Standard	Standard
Anti-static device	Standard	Standard	Standard
Flange end connection	Standard	Standard	Standard
Butt weld end connection	On request	On request	On Request
Socket weld end connection	On request	On request	On Request
Threaded end connetion	On request	On request	On Request
Threaded with weld end connection	On request	On request	On Request
Open/Close position lockable	Standard	Standard	Standard
Manual operation	Standard	Standard	Standard
Electric operation	On request	On request	On Request
Pneumatic operation	On request	On request	On Request
Gas over oil operation	On request	On request	On Request
Stem extension	On request	On request	On Request
Anti sulfur and sulfide corrosion	On request	On request	On Request
Lifting lug	Standard (NPS6" and larger)	Standard (NPS6" and larger)	Standard(NPS 6" and larger)
Transportation support leg	Standard (NPS6" and larger)	Standard (NPS6" and larger)	Standard(NPS 6" and larger)

Note:
Please consult the factory.
Other special functions can be provided if required.

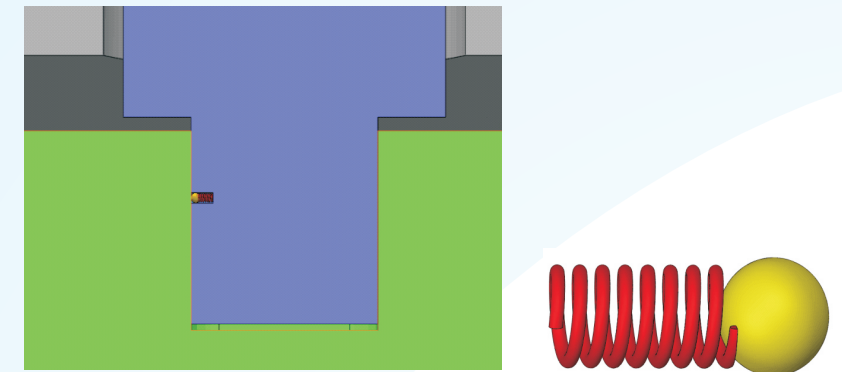
Design Features of Trunnion Mounted Ball Valve

Blow Out-proof Stem



KAYTS valve adopts the geometric limit by T shoulder on the above drawing, this construction makes blow-out proof stem and very convenient for valve assemble and maintenance.

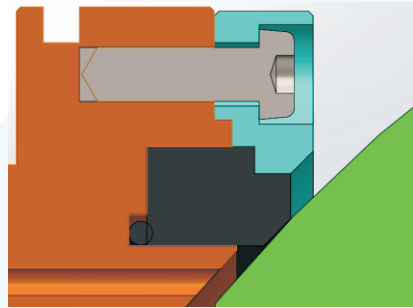
Anti-static Design



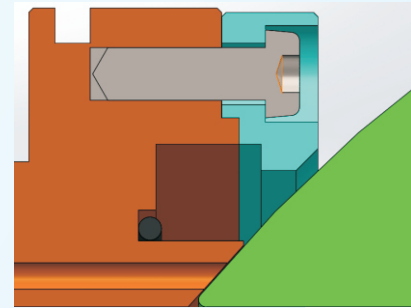
During operation of soft seat ball valve, static will be caused when nonmetal seal material like seatrub with metal part like ball and soon. It will cause electrostatic spark what will bring accident if static can not release from valve body. As shown above, KAYTS valve assembles and uses anti-static spring to connect ball and valve body to be a currentloop, it can release static inside the valve and conform to the API 6D specification.

Design Features of Trunnion Mounted Ball Valve

Fire-safe Design



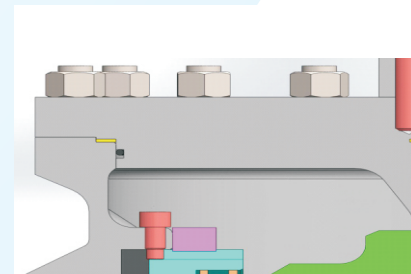
(Normal Working Condition)



(In Case of Fire)

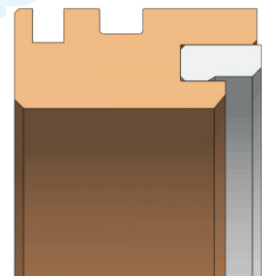
When the soft seat burnt in case of fire, by the force of the seat spring, the seat retainer and the ball will form a metal to metal contact, which can prevent or reduce the seat leakage.

The valve middle flange area and other areas where easily leak by fire, are assembled with spiral wound gaskets to make sure these areas have no leakage when fire occurs.

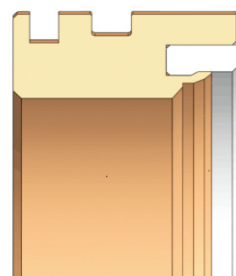


All above design conforms to API 607 & API 6FA specification.

Various Seat Insert Type

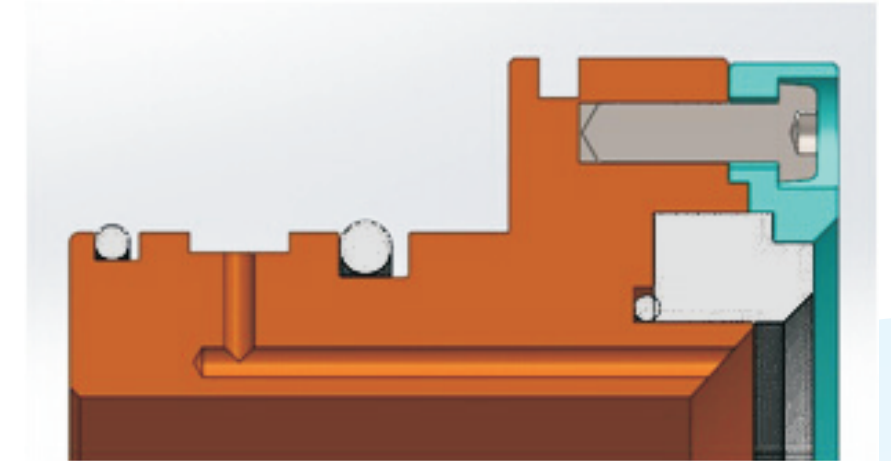


Direct insert type, it applies to all trunnion mounted ball valves which are in low pressure (ANSI 150#) and small size (NPS ≤ 6"). The seat insert will not be blown out and lead to seal failure because of the low pressure.



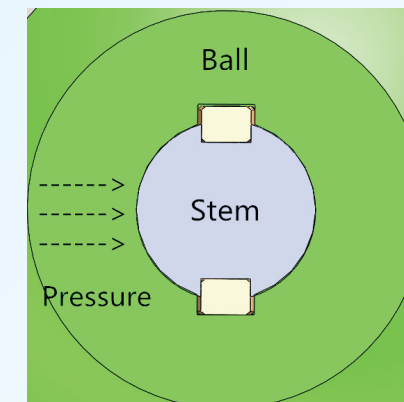
Inner rolling pressed type, it applies to trunnion mounted ball valves in middle pressure (ANSI 300# to 600#) or low pressure big size ball valve. The seat insert is pressed by the inner edge of the seat retainer, this design makes sure that the seat insert will not be blown out by the pressure traps into the seat bottom area.

Design Features of Trunnion Mounted Ball Valve

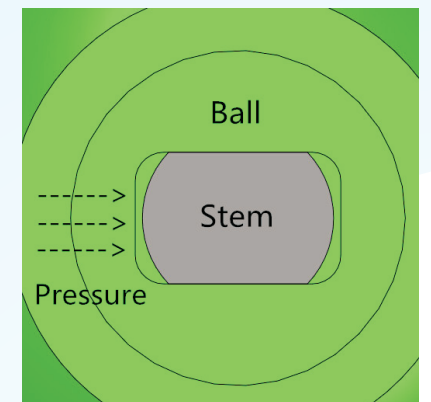


Metal ring pressed type, it applies to trunnion mounted ball valve in high pressure (ANSI 900# and above). The seat insert is pressed by the metal ring which bolted onto the seat retainer. This design makes sure the seat insert will not be blown out by the pressure traps into the seat bottom area. The O-ring behind the seat insert provides an extra sealing.

Valve Torque Transmission



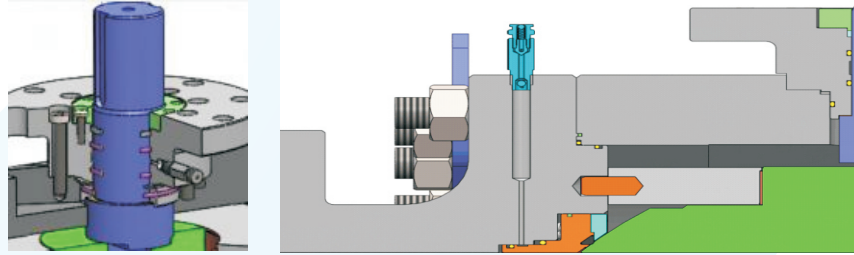
Above drawing on the left shows the traditional torque transmission which stem and ball are connected by key. When valve is closed, the medium pressure is always on the ball, it is bad for the valve life and it will increase the valve torque.



Drawing on the right shows the modified torque transmission by KAYTS. Stem connects with ball through flat stem head. When valve is closed, medium pressure will not applied to stem. It is not only reduce the valve operation torque, but also extend the valve service life.

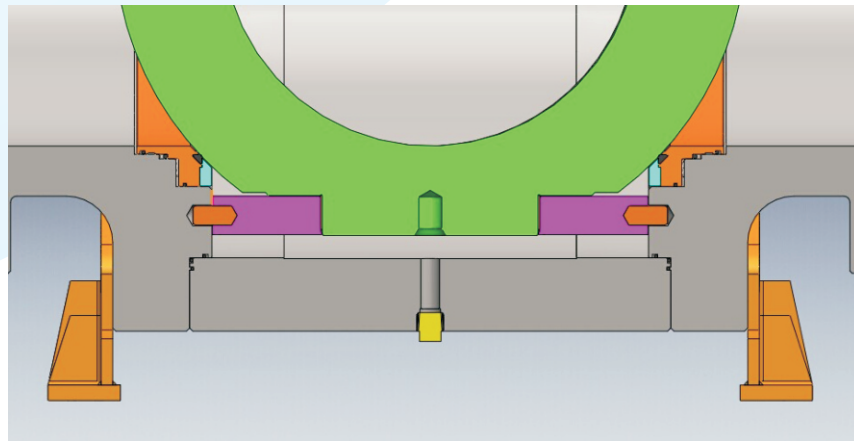
Design Features of Trunnion Mounted Ball Valve

Emergency Sealing Grease Injection System



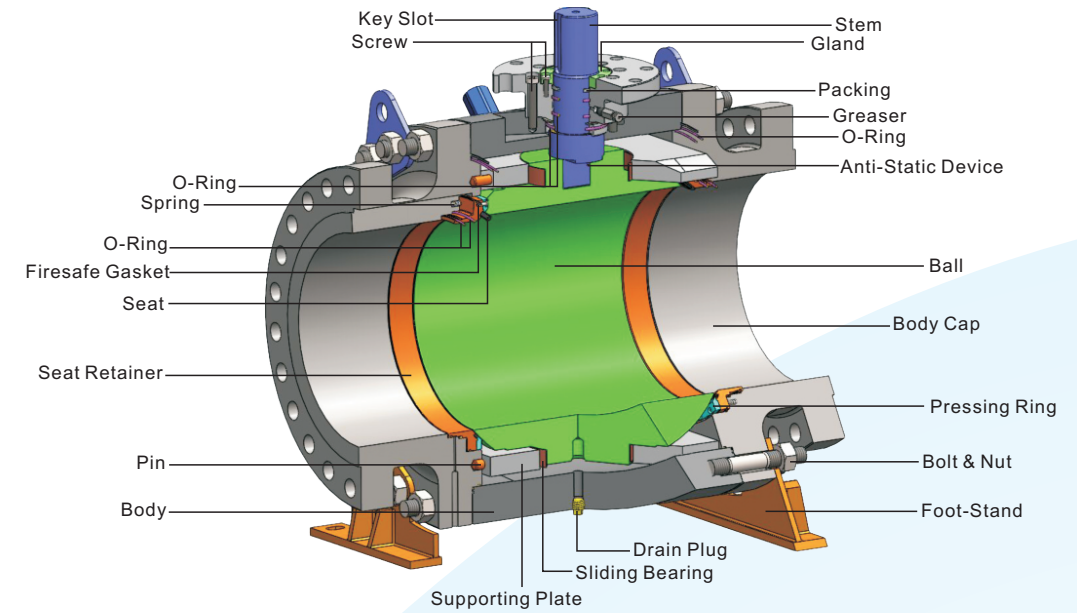
Above drawing on the left shows design of stem sealing grease injection, drawing on the right shows design of seat sealing grease injection. When valve gets leakage, it can use grease inject equipment to inject emergency sealing grease to get temporary sealing. When valve is used after a long time, valve operate torque may be increased. It can also inject appropriate grease into valve to decrease valve operate torque.

DBB & DIB Function



Impurities can be vented/draind from drain plug in the bottom of valve to achieve DBB or DIB function(The specific function of DBB or DIB is specified by the customer)

Typical Construction of Trunnion Mounted Ball Valve



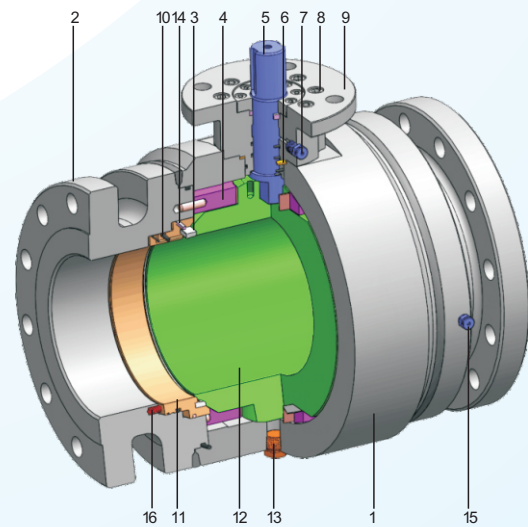
Main Part Materials Table (Trunnion Mounted Ball Valve)

	Carbon Steel		S.S Steel			
	A105	LF2	F304	F304L	F316	F316L
Body	A105	LF2	F304	F304L	F316	F316L
Body Cap	A105	LF2	F304	F304L	F316	F316L
Stem	F6a HCr		F304	F304	F316	F316
Seat	RPTFE/NYLON/PEEK/DEVLON					
Retainer	A105	LF2	F304	F304L	F316	F316L
Ball	A105 HCr	LF2 HCr	F304 HCr	F304L HCr	F316 HCr	F316L HCr
Gland	A105	LF2	F304	F304L	F316	F316L
Seat Spring	INCONEL X750/17-7PH					
Static Spring	304					
Packing	Flexible Graphite					
Packing Gland	A105	LF2	F304	F304L	F316	F316L
Bolt	B7	L7	B8		B8	
Nut	2H	4	8		8	
O-ring	NBR/VITON					
Gasket	Graphite Wound Gasket		Graphite Wound Gasket		Graphite Wound Gasket	

Note:
Cast body valve is also available.
Different material selection may be available on request.

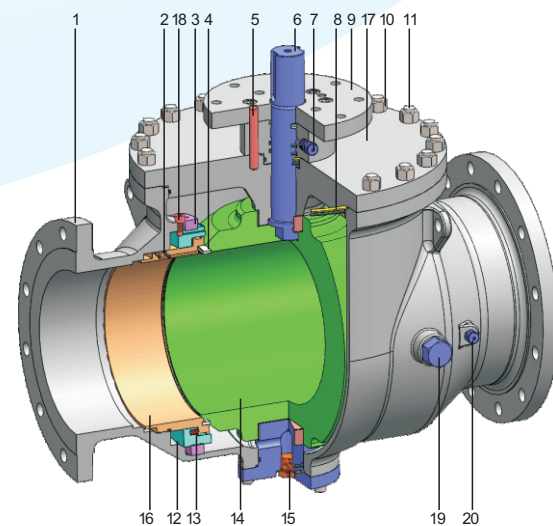
Other Types of Body Connection For Trunnion Mounted Ball Valve

Welded Body Ball Valve



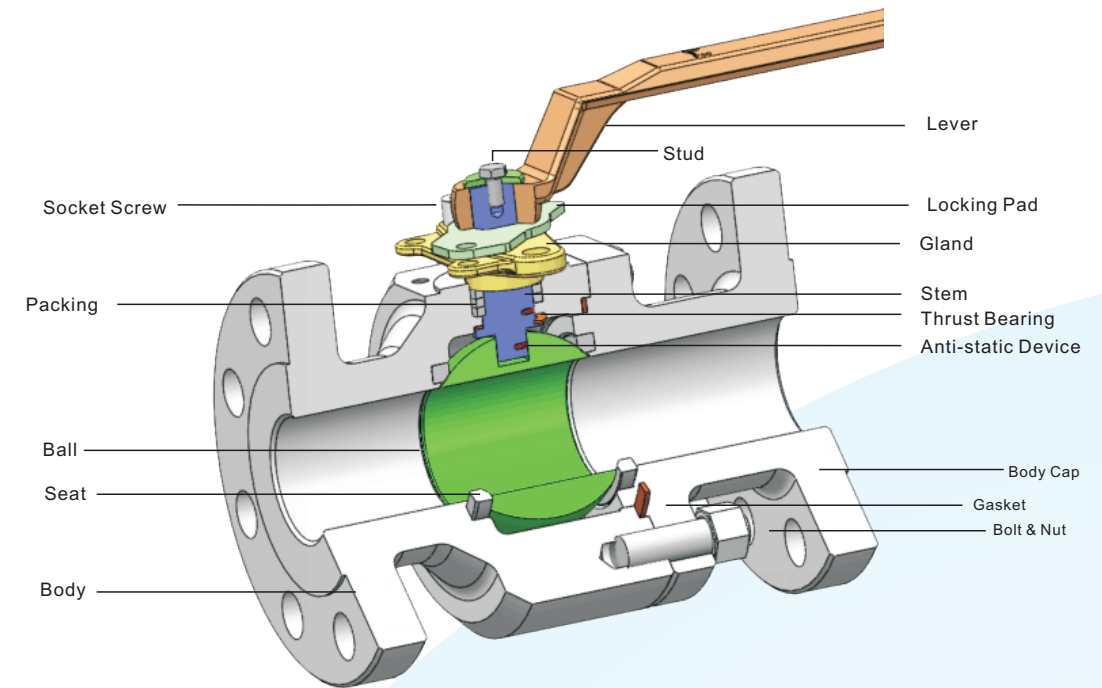
1	Body	9	Mounting Pad
2	Body Cap	10	O-ring
3	Seat	11	Seat Retainer
4	Supporting Plate	12	Ball
5	Stem	13	Drain Plug
6	Bearing	14	Seat Gasket
7	Stem Greaser	15	Seat Greaser
8	Screw	16	Spring

Top Entry Ball Valve



1	Body	11	Stud
2	O-ring	12	Spring Seat
3	Seat Nut	13	Spring
4	Seat	14	Ball
5	Pin	15	Drain Plug
6	Stem	16	Seat Retainer
7	Stem Greaser	17	Bonnet
8	O-ring	18	Anti-Rotating Bolt
9	Mounting Pad	19	Position Bolt
10	Nut	20	Seat Greaser

Floating Ball Valve



Main Part Materials Table (Floating Ball Valve)

	Carbon Steel		S.S Steel			
Body	A105	LF2	F304	F304L	F316	F316L
Body Cap	A105	LF2	F304	F304L	F316	F316L
Stem	F6a HCr		F304	F304	F316	F316
Seat	RPTFE					
Ball	A105 HCr	LF2 HCr	F304 HCr	F304L HCr	F316 HCr	F316L HCr
Gland	A105	LF2	F304	F304L	F316	F316L
Static Spring	304					
Packing	Flexible Graphite					
Bolt	B7	L7	B8		B8	
Nut	2H	4	8		8	
Gasket	Graphite Wound Gasket		Graphite Wound Gasket		Graphite Wound Gasket	

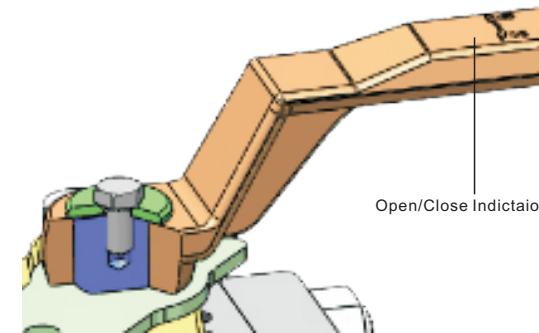
Note:
Cast body valve is also available.
Different material selection may be available on request.

Floating Ball Valve Technical and Function Configuration Sheet

Item	Bolted body	Fully welded body
Independent ball and stem	Standard	Standard
Soft seats with firesafe metal lip	Standard	Standard
Metal seats	On request	On request (NPS6" and larger)
Dual Seated (soft seats+ metal seats)	On request	On request
Blow out- proof stem	Standard	Standard
Firesafe design	Standard	Standard
Anti-static device	Standard	Standard
Flange end connection	Standard	Standard
Butt weld end connection	On request	On request
Socket weld end connection	On request	On request
Threaded end connetion	On request	On request
Threaded with weld end connection	On request	On request
Open/Close position lockable	Standard	Standard
Manual operation	Standard	Standard
Electric operation	On request	On request
Pneumatic operation	On request	On request
Gas over oil operation	On request	On request
Stem extension	On request	On request
Anti sulfur and sulfide corrosion	On request	On request

Note:
Please consult the factory.
Other special functions can be provided if required.

Design Features of Floating Ball Valve



Wrench With Valve Open/Close Indication

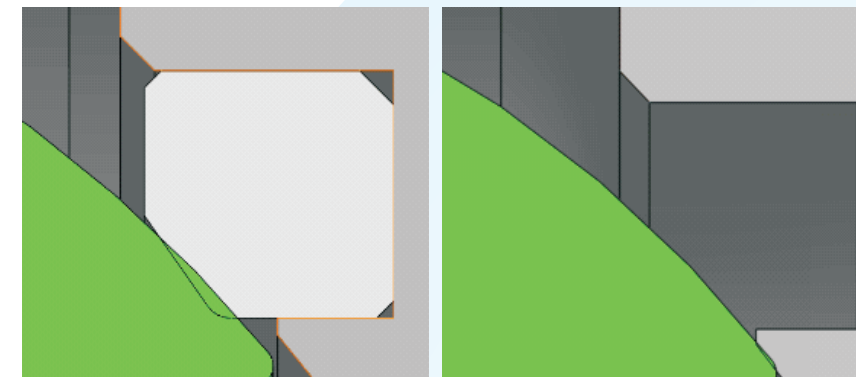
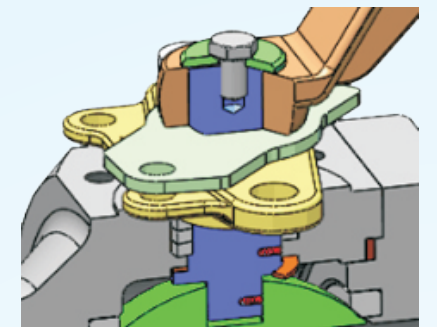
Connection between flat-head stem and wrench is permanently indicating valve position. There is no possibility of misalignment during installation.

Locking Device

Valve is equipped with locking devices at the full-open and full-closed position, a padlock maybe installed in either position in order to prevent wrong operation of the valve.

Blow out-proof Stem Construction

The lower part of stem is shouldered and the stem is installed from the inner of the body .This construction makes blow outproof the stem and generates a metal to metal sealing after fire.



(Normal Working)

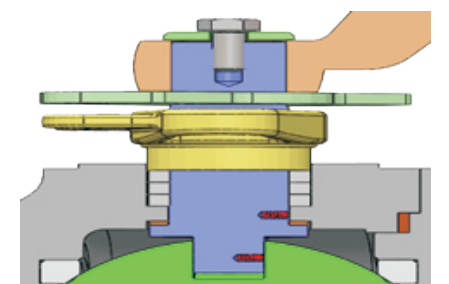
(In Case of Fire)

Fire-safe Design

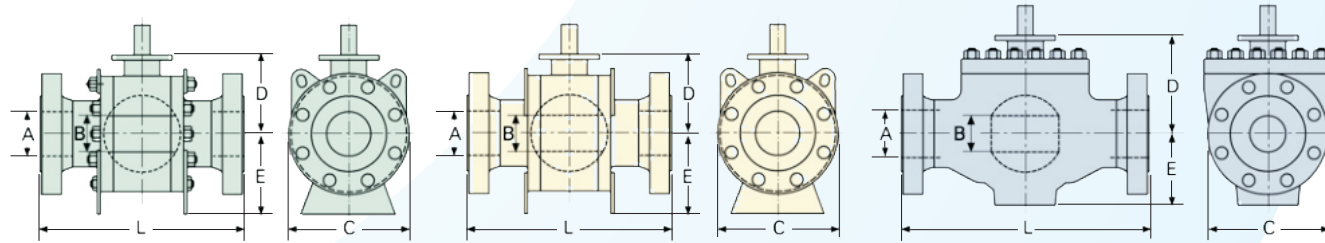
Fire-safe design is achieved with a secondary metal to metal seal between ball and body. This condition is generated during fire occurrence by the destruction of the primary soft seat . This arrangement conforms to the firesafe requirements of API 6FA or API 607.

Anti-static Design

During operation in dry gas service , static electricity may build up on the ball, the anti-static device guarantees auniform potential in all valve parts , therefore preventing sparks.



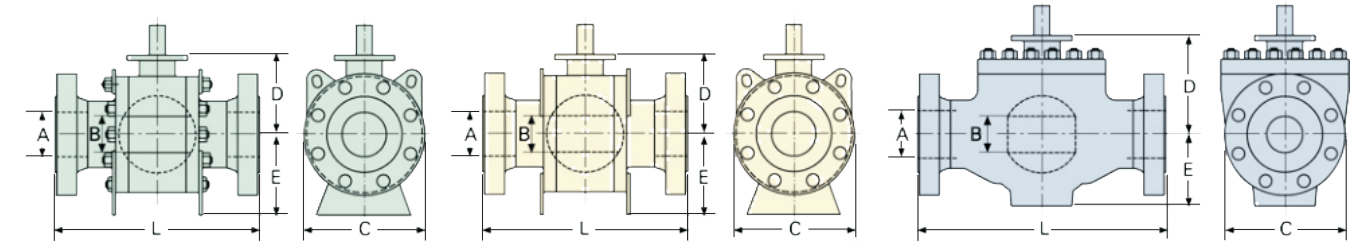
DIMENSIONS & Weights (Trunnion Mounted Ball Valve)



CLASS 150 FULL BORE																				
ALL TYPES		SIDE ENTRY							WELDED BODY							TOP-ENTRY				
SIZE mm	A	B	L-RF	L-WE	C	D	E	WEIGHT kg	L-RF	L-WE	C	D	E	WEIGHT kg	L-RF	L-WE	C	D	E	WEIGHT kg
50	49	49	178	216	153	106	102	27	178	216	153	106	102	(1)	292	292	180	207	85	30
80	74	74	203	283	191	157	126	54	203	283	191	157	126	(1)	356	356	230	223	114	57
100	100	100	229	305	232	198	163	89	229	305	232	198	163	(1)	432	432	282	280	140	100
150	150	150	394	457	307	247	187	160	394	457	307	247	187	(1)	559	559	323	275	219	215
200	201	201	457	521	392	280	224	253	457	521	392	280	224	(1)	660	660	405	321	265	407
250	252	252	533	559	465	320	278	387	533	559	465	320	278	(1)	787	787	490	355	315	560
300	303	303	610	635	543	337	306	559	610	635	543	337	306	(1)	838	838	565	470	405	710
350	334	334	686	762	608	374	334	760	686	762	608	374	334	(1)	889	889	660	455	432	760
400	385	385	762	838	675	408	358	1020	762	838	675	408	358	(1)	991	991	700	460	451	1100
450	436	436	864	914	635	439	390	1215	864	914	635	439	390	(1)	1092	1092	747	503	472	1512
500	487	487	914	991	849	492	434	1793	914	991	849	492	434	(1)	1194	1194	849	560	560	1930
550	538	538	991	1092	935	528	477	2359	991	1092	935	528	477	(1)	1296	1296	935	565	591	2750
600	589	589	1067	1143	1005	588	523	3099	1067	1143	1005	588	523	(1)	1397	1397	1005	610	600	3200
650	633	633	1143	1245	1066	627	564	3685	1143	1245	1066	627	564	(1)	1448	1448	1066	670	632	3800
700	684	684	1244	1347	1136	644	658	4490	1244	1347	1136	644	658	(1)	1549	1549	1136	730	710	4600
750	735	735	1295	1397	985	691	704	5215	1295	1397	985	691	704	(1)	1651	1651	1259	800	790	5630
800	779	779	1371	1524	1300	742	746	6800	1371	1524	1300	742	746	(1)	1778	1778	1300	846	830	7085
850	830	830	1473	1626	1370	759	773	7800	1473	1626	1370	759	773	(1)	1930	1930	1400	870	880	7800
900	874	874	1524	1728	1430	812	807	8800	1524	1728	1430	812	807	(1)	2083	2083	1438	935	933	9100
1000	976	976	1753	1956	1595	900	898	12560	1753	1956	1595	900	898	(1)	2337	2337	1650	1012	1030	12790
1050	1020	1020	1790	2083	1650	943	937	14280	1790	2083	1650	943	937	(1)	2437	2437	1700	1070	1065	15100
1200	1166	1166	1995	2388	1920	1097	1066	21900	1995	2388	1920	1097	1066	(1)	2540	2540	1950	1190	1230	22600
1400	1360	1360	2489	2489	2260	1302	1253	34100	2489	2489	2260	1302	1253	(1)	TBA	TBA	TBA	TBA	TBA	TBA

Note:

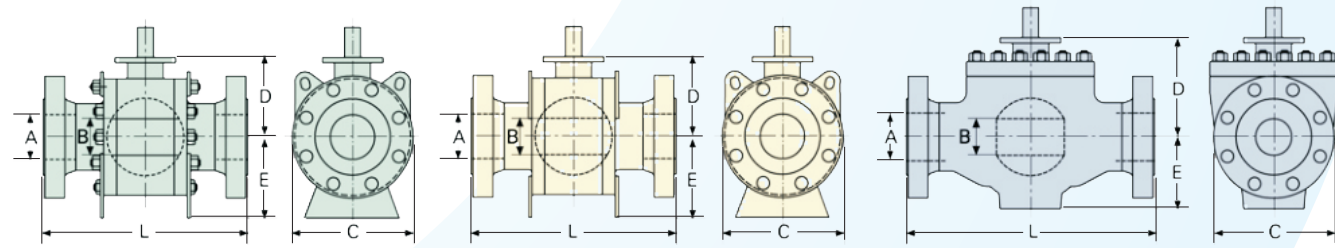
(1) Please consult the factory.
For end flange dimensions please refer to ASME B16.5.
Dimensions C, D, E and weights are subject to change without notice.
Weights listed are relevant to side entry flanged end forged valves, please consult the factory for weights of other type of valves.



CLASS 150 REDUCED BORE																				
ALL TYPES		SIDE ENTRY							WELDED BODY							TOP-ENTRY				
SIZE mm	A	B	L-RF	L-WE	C	D	E	WEIGHT kg	L-RF	L-WE	C	D	E	WEIGHT kg	L-RF	L-WE	C	D	E	WEIGHT kg
50x40	49	38	178	216	152	94	98	25	178	216	152	94	98	(1)	292	292	175	207	85	25
80x50	74	49	203	283	191	106	100	30	203	283	191	106	100	(1)	356	356	191	210	87	34
100x80	100	74	229	305	229	154	127	60	229	305	229	154	127	(1)	432	432	230	225	110	70
150x100	150	100	394	457	279	198	163	100	394	457	279	198	163	(1)	559	559	279	270	143	130
200x150	201	150	457	521	343	252	187	185	457	521	343	252	187	(1)	660	660	343	275	215	250
250x200	252	201	533	559	406	280	222	291	533	559	406	280	222	(1)	787	787	406	320	262	455
300x250	303	252	610	635	483	323	280	462	610	635	483	323	280	(1)	838	838	485	355	310	485
350x250	334	252	686	762	535	324	275	518	686	762	535	324	275	(1)	889	889	535	355	310	665
350x300	334	303	686	762	535	342	300	610	686	762	535	342	300	(1)	889	889	535	475	395	790
400x300	385	303	762	838	595	346	303	698	762	838	595	346	303	(1)	991	991	595	475	395	940
400x350	385	334	762	838	595	370	335	820	762	838	595	370	335	(1)	991	991	660	450	430	908
450x400	436	385	864	914	635	415	348	1060	864	914	635	415	348	(1)	1092	1092	700	460	450	1248
500x400	487	385	914	991	700	415	350	1100	914	991	700	415	350	(1)	1194	1194	700	460	450	1542
500x450	487	436	914	991	700	439	390	1190	914	991	700	439	390	(1)	1194	1194	745	495	470	1740
600x500	589	487	1067	1143	815	490	435	1970	1067	1143	815	490	435	(1)	1397	1397	870	550	580	2378
750x600	735	589	1295	1397	985	588	515	3250	1295	1397	985	588	515	(1)	1651	1651	1020	590	592	4008
900x750	874	735	1524	1728	1170	690	700	6314	1524	1728	1170	690	700	(1)	2083	2083	1250	795	765	7048

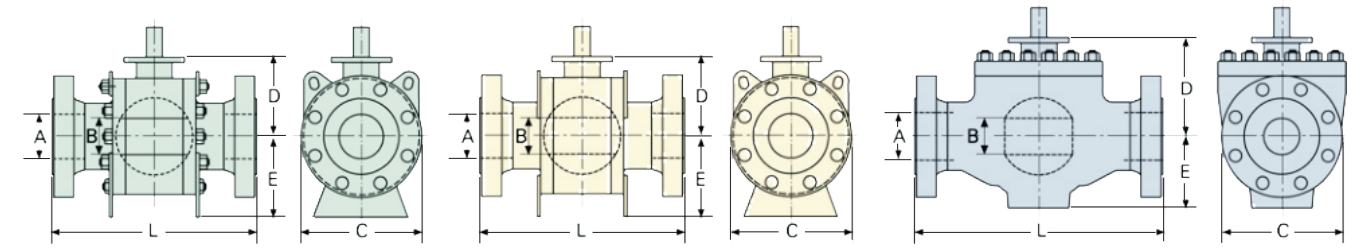
Note:

(1) Please consult the factory.
For end flange dimensions please refer to ASME B16.5.
Dimensions C, D, E and weights are subject to change without notice.
Weights listed are relevant to side entry flanged end forged valves, please consult the factory for weights of other type of valves.



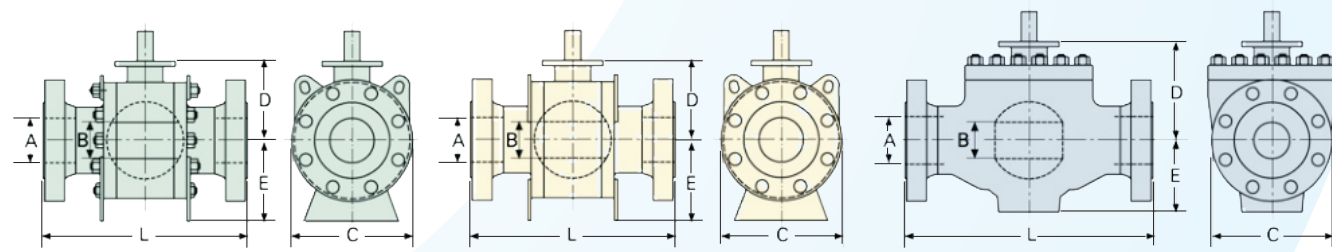
CLASS 300 FULL BORE																				
ALL TYPES		SIDE ENTRY							WELDED BODY							TOP-ENTRY				
SIZE mm	A	B	L-RF	L-WE	C	D	E	WEIGHT	L-RF	L-WE	C	D	E	WEIGHT	L-RF	L-WE	C	D	E	WEIGHT
50	49	49	216	216	165	100	95	27	216	216	165	100	95	(1)	292	292	185	211	90	36
80	74	74	283	283	210	150	120	55	283	283	210	150	120	(1)	356	356	235	226	119	63
100	100	100	305	305	254	200	160	92	305	305	254	200	160	(1)	432	432	287	286	145	106
150	150	150	403	457	318	245	200	182	403	457	318	245	200	(1)	559	559	330	282	224	221
200	201	201	502	521	385	275	230	278	502	521	385	275	230	(1)	660	660	410	325	270	412
250	252	252	568	559	470	330	295	500	568	559	470	330	295	(1)	787	787	500	360	320	566
300	303	303	648	635	540	355	330	733	648	635	540	355	330	(1)	838	838	570	475	410	715
350	334	334	762	762	630	390	345	1029	762	762	630	390	345	(1)	889	889	665	460	437	766
400	385	385	838	838	693	430	390	1418	838	838	693	430	390	(1)	991	991	707	465	456	1106
450	436	436	914	914	770	455	410	1592	914	914	770	455	410	(1)	1092	1092	752	508	477	1519
500	487	487	991	991	850	500	465	2195	991	991	850	500	465	(1)	1194	1194	855	565	565	1936
550	538	538	1092	1092	940	525	480	2788	1092	1092	940	525	480	(1)	1296	1296	942	572	596	2756
600	589	589	1143	1143	1020	590	545	3460	1143	1143	1020	590	545	(1)	1397	1397	1010	617	605	3208
650	633	633	1245	1245	1080	630	580	4660	1245	1245	1080	630	580	(1)	1448	1448	1072	678	637	3808
700	684	684	1346	1346	1150	640	665	5770	1346	1346	1150	640	665	(1)	1549	1549	1141	738	715	4607
750	735	735	1397	1397	1235	700	730	6590	1397	1397	1235	700	730	(1)	1651	1651	1265	811	795	5638
800	779	779	1524	1524	1320	745	765	7932	1524	1524	1320	745	765	(1)	1778	1778	1312	850	835	7092
850	830	830	1626	1626	1390	760	800	9040	1626	1626	1390	760	800	(1)	1930	1930	1408	877	885	7811
900	874	874	1727	1727	1445	805	825	10093	1727	1727	1445	805	825	(1)	2083	2083	1445	942	938	9112
1000	976	976	1956	1956	1620	900	920	13775	1956	1956	1620	900	920	(1)	2337	2337	1663	1020	1036	12798
1050	1020	1020	2083	2083	1685	968	950	16105	2083	2083	1685	968	950	(1)	2437	2437	1715	1081	1070	15113
1200	1166	1166	2170	2170	1460	1100	1100	24060	2170	2170	1460	1100	1100	(1)	2540	2540	1965	1201	1236	22614
1400	1360	1360	2743	2743	2275	1285	1270	38155	2743	2743	2275	1285	1270	(1)	(1)	(1)	(1)	(1)	(1)	(1)

Note:
 (1) Please consult the factory.
 For end flange dimensions please refer to ASME B16.5.
 Dimensions C, D, E and weights are subject to change without notice.
 Weights listed are relevant to side entry flanged end forged valves, please consult the factory for weights of other type of valves.



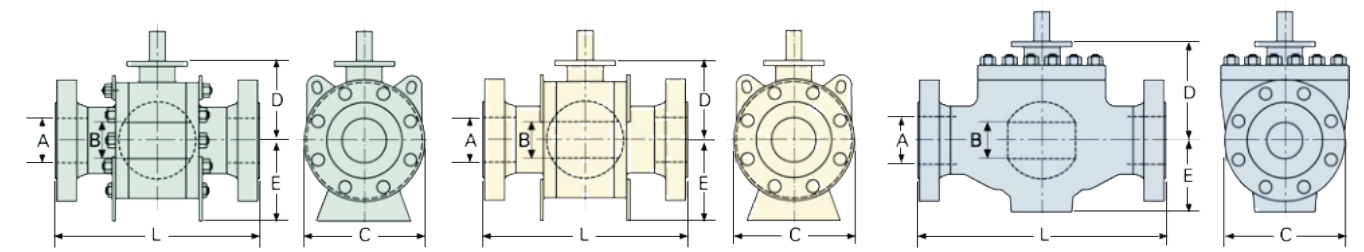
CLASS 300 REDUCED BORE																				
ALL TYPES		SIDE ENTRY							WELDED BODY							TOP-ENTRY				
SIZE mm	A	B	L-RF	L-WE	C	D	E	WEIGHT kg	L-RF	L-WE	C	D	E	WEIGHT kg	L-RF	L-WE	C	D	E	WEIGHT kg
50x40	49	38	216	216	165	94	100	25	216	216	165	94	100	(1)	292	292	178	206	80	26
80x50	74	49	283	283	210	100	95	32	283	283	210	100	95	(1)	356	356	210	211	90	42
100x80	100	74	305	305	254	150	120	62	305	305	254	150	120	(1)	432	432	254	226	119	82
150x100	150	100	403	457	318	200	160	115	403	457	318	200	160	(1)	559	559	318	286	145	161
200x150	201	150	502	521	381	245	200	219	502	521	381	245	200	(1)	660	660	381	282	224	285
250x200	252	201	568	559	445	275	230	292	568	559	445	275	230	(1)	787	787	445	325	270	536
300x250	303	252	648	635	520	330	295	594	648	635	520	330	295	(1)	838	838	520	360	320	572
350x250	334	252	762	762	585	330	295	643	762	762	585	330	295	(1)	889	889	520	360	320	781
350x300	334	303	762	762	585	355	330	816	762	762	585	355	330	(1)	889	889	585	475	410	916
400x300	385	303	838	838	650	355	330	965	838	838	650	355	330	(1)	991	991	650	475	410	1092
400x350	385	334	838	838	650	390	345	1125	838	838	650	390	345	(1)	991	991	665	460	437	1095
450x400	436	385	914	914	710	430	390	1593	914	914	710	430	390	(1)	1092	1092	710	465	456	1462
500x400	487	385	991	991	775	430	390	1663	991	991	775	430	390	(1)	1194	1194	775	465	456	1809
500x450	487	436	991	991	775	455	410	1792	991	991	775	455	410	(1)	1194	1194	775	508	477	2023
600x500	589	487	1143	1143	915	500	465	2661	1143	1143	915	500	465	(1)	1397	1397	915	565	565	2774
750x600	735	589	1397	1397	1090	590	545	4484	1397	1397	1090	590	545	(1)	1651	1651	1090	617	605	4665
900x750	874	735	1727	1727	1270	700	730	8183	1727	1727	1270	700	730	(1)	2083	2083	1270	811	795	8298

Note:
 (1) Please consult the factory.
 For end flange dimensions please refer to ASME B16.5.
 Dimensions C, D, E and weights are subject to change without notice.
 Weights listed are relevant to side entry flanged end forged valves, please consult the factory for weights of other type of valves.



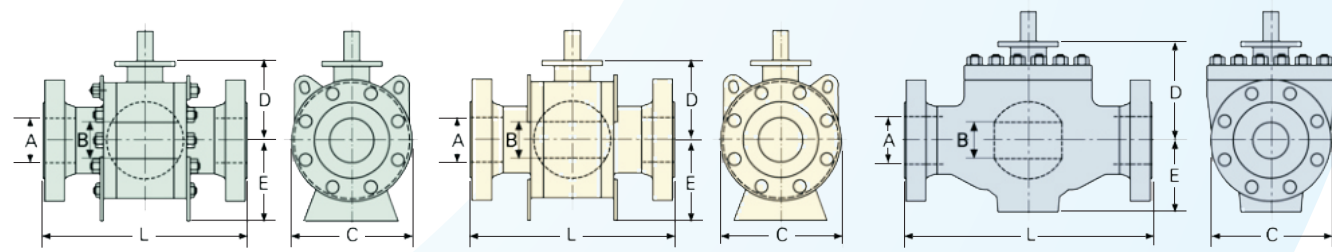
CLASS 600 FULL BORE																							
ALL TYPES		SIDE ENTRY								WELDED BODY								TOP-ENTRY					
SIZE mm	A	B	L-RF	L-RTJ	L-WE	C	D	E	WEIGHT kg	L-RF	L-RTJ	L-WE	C	D	E	WEIGHT kg	L-RF	L-RTJ	L-WE	C	D	E	WEIGHT kg
50	49	49	292	295	292	165	102	98	31	292	295	292	165	102	98	(1)	292	295	292	190	215	95	41
80	74	74	356	359	356	210	165	128	62	356	359	356	210	165	128	(1)	356	359	356	240	232	124	67
100	100	100	432	435	432	273	210	160	113	432	435	432	273	210	160	(1)	432	435	432	290	294	150	110
150	150	150	559	562	559	356	250	200	253	559	562	559	356	250	200	(1)	559	562	559	335	287	129	226
200	201	201	660	664	660	419	288	255	485	660	664	660	419	288	255	(1)	660	664	660	415	324	275	417
250	252	252	787	791	787	510	330	308	758	787	791	787	510	330	308	(1)	787	791	787	505	365	325	570
300	303	303	838	841	838	575	378	348	1067	838	841	838	575	378	348	(1)	838	841	838	575	480	415	720
350	334	334	889	892	889	628	394	360	1083	889	892	889	628	394	360	(1)	889	892	889	670	465	442	770
400	385	385	991	994	991	700	430	410	1525	991	994	991	700	430	410	(1)	991	994	991	712	470	461	1112
450	436	436	1092	1095	1092	774	467	430	2095	1092	1095	1092	774	467	430	(1)	1092	1095	1092	757	512	482	1523
500	487	487	1194	1200	1194	865	500	492	2638	1194	1200	1194	865	500	492	(1)	1194	1200	1194	860	570	570	1940
550	538	538	1296	1305	1296	950	550	505	3787	1296	1305	1296	950	550	505	(1)	1296	1305	1296	947	578	602	2760
600	589	589	1397	1406	1397	1028	594	570	4736	1397	1406	1397	1028	594	570	(1)	1397	1406	1397	1015	622	610	3213
650	633	633	1448	1460	1448	1015	630	618	5647	1448	1460	1448	1015	630	618	(1)	1448	1460	1448	1078	682	640	3813
700	684	684	1549	1562	1549	1172	665	692	6758	1549	1562	1549	1172	665	692	(1)	1549	1562	1549	1146	742	722	4612
750	735	735	1684	1697	1684	1290	741	800	8377	1684	1697	1684	1290	741	800	(1)	1684	1697	1684	1270	817	804	5640
800	779	779	1778	1794	1778	1330	756	804	9738	1778	1794	1778	1330	756	804	(1)	1778	1794	1778	1317	855	840	7103
850	830	830	1930	1946	1930	1400	782	817	11336	1930	1946	1930	1400	782	817	(1)	1930	1946	1930	1423	893	890	7822
900	874	874	2083	2098	2083	1546	869	945	13298	2083	2098	2083	1546	869	945	(1)	2083	2098	2083	1450	947	944	9118
1000	976	976	2080	2170	2170	1645	916	980	18335	2080	2170	2170	1645	916	980	(1)	2170	2170	2170	1668	1025	1041	12805
1050	1020	1020	2175	2175	2175	1795	995	1110	21356	2175	2175	2175	1795	995	1110	(1)	2175	2175	2175	1720	1086	1075	15118
1200	1166	1166	2435	2435	2435	2070	1132	1265	31195	2435	2435	2435	2070	1132	1265	(1)	2435	2435	2435	1970	1506	1240	22619
1400	1360	1360	2710	2710	2710	2390	1290	1450	47483	2710	2710	2710	2390	1290	1450	(1)	N/A	N/A	N/A	N/A	N/A	N/A	N/A

Note:
 (1) Please consult the factory.
 For end flange dimensions please refer to ASME B16.5.
 Dimensions C, D, E and weights are subject to change without notice.
 Weights listed are relevant to side entry flanged end forged valves, please consult the factory for weights of other type of valves.



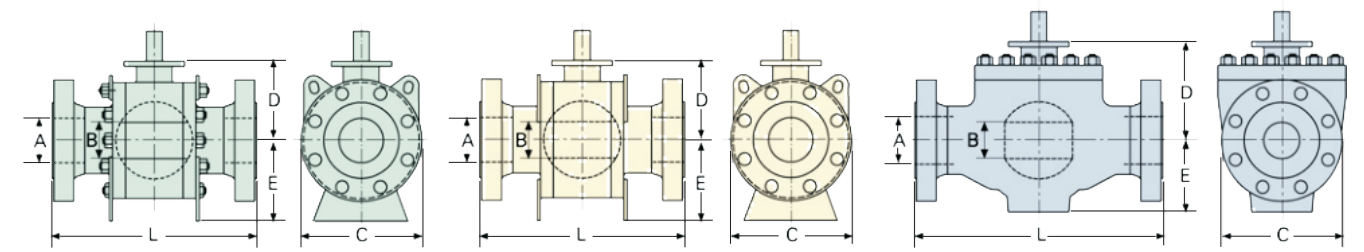
CLASS 600 REDUCED BORE																							
ALL TYPES		SIDE ENTRY								WELDED BODY								TOP-ENTRY					
SIZE mm	A	B	L-RF	L-RTJ	L-WE	C	D	E	WEIGHT kg	L-RF	L-RTJ	L-WE	C	D	E	WEIGHT kg	L-RF	L-RTJ	L-WE	C	D	E	WEIGHT kg
50X40	49	38	292	295	292	165	95	102	31	292	295	292	165	95	102	(1)	368	295	368	178	210	85	34
80X50	74	49	356	359	356	210	102	98	39	356	359	356	210	102	98	(1)	356	359	356	210	215	95	46
100X80	100	74	432	436	432	373	165	128	78	432	436	432	373	165	128	(1)	432	436	432	273	232	124	94
150X100	150	100	559	562	559	356	210	160	150	559	562	559	356	210	160	(1)	559	562	559	356	294	150	82
200X150	201	150	660	664	660	419	250	200	292	660	664	660	419	250	200	(1)	660	664	660	419	287	129	318
250X200	252	201	787	791	787	510	288	255	550	787	791	787	510	288	255	(1)	787	791	787	510	324	275	600
300X250	303	252	838	841	838	560	330	308	811	838	841	838	560	330	308	(1)	838	841	838	560	365	325	719
350X250	334	252	889	892	889	605	330	308	912	889	892	889	605	330	308	(1)	889	892	889	605	365	325	991
350X300	334	303	889	892	889	605	378	348	1145	889	892	889	605	378	348	(1)	889	892	889	605	480	415	1191
400X300	385	303	991	994	991	685	378	348	1348	991	994	991	685	378	348	(1)	991	994	991	685	480	415	1411
400X350	385	334	889	894	889	628	394	360	1083	889	894	889	628	394	360	(1)	991	994	991	685	465	442	1377
450X400	436	385	1092	1095	1092	745	430	410	1680	1092	1095	1092	745	430	410	(1)	1092	1095	1092	745	470	461	1856
500X400	487	385	1194	1200	1194	815	430	410	2085	1194	1200	1194	815	430	410	(1)	1194	1200	1194	815	470	461	2896
500X450	487	436	1194	1200	1194	815	467	430	2375	1194	1200	1194	815	467	430	(1)	1194	1200	1194	815	512	482	2616
600X500	589	487	1397	1406	1397	940	500	492	3248	1397	1406	1397	940	500	492	(1)	1397	1406	1397	940	570	570	3518
750X600	735	589	1684	1697	1684	1130	594	570	5768	1684	1697	1684	1130	594	570	(1)	1684	1697	1684	1130	622	610	5968
900X750	874	735	2083	2098	2083	1315	708	751	10376	2083	2098	2083	1315	708	751	(1)	2083	2098	2083	1315	817	804	10572

Note:
 (1) Please consult the factory.
 For end flange dimensions please refer to ASME B16.5.
 Dimensions C, D, E and weights are subject to change without notice.
 Weights listed are relevant to side entry flanged end forged valves, please consult the factory for weights of other type of valves.



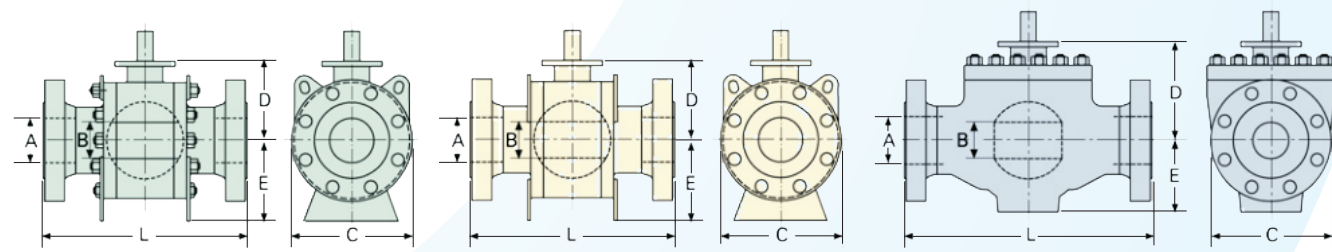
CLASS 900 FULL BORE																							
ALL TYPES		SIDE ENTRY								WELDED BODY								TOP-ENTRY					
SIZE mm	A	B	L-RF	L-RTJ	L-WE	C	D	E	WEIGHT kg	L-RF	L-RTJ	L-WE	C	D	E	WEIGHT kg	L-RF	L-RTJ	L-WE	C	D	E	WEIGHT kg
50	49	49	368	371	368	216	104	103	48	368	371	368	216	104	103	(1)	368	371	368	216	212	85	52
80	74	74	381	384	381	241	163	132	55	381	384	381	241	163	132	(1)	381	384	381	241	227	113	110
100	100	100	457	460	457	292	211	169	145	457	460	457	292	211	169	(1)	457	460	457	292	277	144	200
150	150	150	610	613	610	381	259	213	360	610	613	610	381	259	213	(1)	610	613	610	381	283	333	430
200	201	201	737	740	737	470	297	264	580	737	740	737	470	297	264	(1)	737	740	737	470	334	274	800
250	252	252	838	841	838	545	342	333	1010	838	841	838	545	342	333	(1)	838	841	838	545	380	320	1000
300	303	303	965	968	965	610	384	379	1510	965	968	965	610	384	379	(1)	965	968	965	610	507	418	1300
350	322	322	1029	1038	1029	640	398	368	1450	1029	1038	1029	640	398	368	(1)	1029	1038	1029	640	520	443	1695
400	373	373	1130	1140	1130	710	436	437	2150	1130	1140	1130	710	436	437	(1)	1130	1140	1130	710	538	462	2560
450	423	423	1219	1232	1219	800	484	497	2820	1219	1232	1219	800	484	497	(1)	1219	1232	1219	800	580	487	3400
500	471	471	1321	1333	1321	890	532	503	4200	1321	1333	1321	890	532	503	(1)	1321	1333	1321	890	625	605	4400
600	570	570	1549	1568	1549	1059	617	633	6800	1549	1568	1549	1059	617	633	(1)	1549	1568	1549	1059	690	625	7200
700	665	665	1753	1775	1753	1234	674	706	9900	1753	1775	1753	1234	674	706	(1)	1753	1775	1753	1234	820	723	10400
750	712	712	1880	1902	1880	1300	723	777	12180	1880	1902	1880	1300	723	777	(1)	1880	1902	1880	1300	880	800	12875
800	760	760	2032	2054	2032	1357	784	809	11820	2032	2054	2032	1357	784	809	(1)	2032	2054	2032	1357	938	870	15950
850	808	808	2159	2188	2159	1468	807	852	17200	2159	2188	2159	1468	807	852	(1)	2159	2188	2159	1468	982	920	17500
900	855	855	2286	2315	2286	1532	848	898	18900	2286	2315	2286	1532	848	898	(1)	2286	2315	2286	1532	1050	990	20600

Note:
(1) Please consult the factory.
For end flange dimensions please refer to ASME B16.5.
Dimensions C, D, E and weights are subject to change without notice.
Weights listed are relevant to side entry flanged end forged valves, please consult the factory for weights of other type of valves.



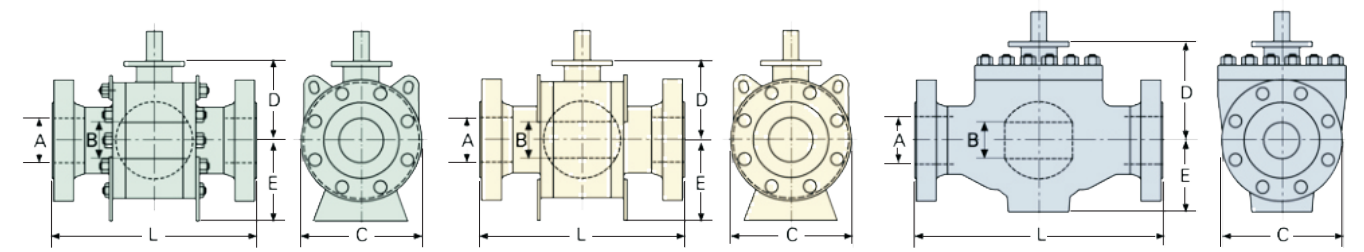
CLASS 900 REDUCED BORE																							
ALL TYPES		SIDE ENTRY								WELDED BODY								TOP-ENTRY					
SIZE mm	A	B	L-RF	L-RTJ	L-WE	C	D	E	WEIGHT kg	L-RF	L-RTJ	L-WE	C	D	E	WEIGHT kg	L-RF	L-RTJ	L-WE	C	D	E	WEIGHT kg
50X40	49	38	368	371	368	216	103	102	41	368	371	368	216	103	102	(1)	368	371	368	216	211	84	50
80X50	74	49	381	384	381	241	103	102	52	381	384	381	241	103	102	(1)	381	384	381	241	211	84	75
100X80	100	74	457	460	457	292	166	127	95	457	460	457	292	166	127	(1)	457	460	457	292	227	109	140
150X100	150	100	610	613	610	381	208	163	205	610	613	610	381	208	163	(1)	610	613	610	381	276	145	273
200X150	201	150	737	740	737	470	263	213	440	737	740	737	470	263	213	(1)	737	740	737	470	280	223	548
250X200	252	201	838	841	838	545	294	269	690	838	841	838	545	294	269	(1)	838	841	838	545	339	271	906
300X250	303	252	965	968	965	610	348	328	1155	965	968	965	610	348	328	(1)	965	968	965	610	380	324	1090
350X250	322	252	1029	1038	1029	640	348	328	1240	1029	1038	1029	640	348	328	(1)	1029	1038	1029	640	380	324	1495
350X300	322	303	1029	1038	1029	640	400	382	1635	1029	1038	1029	640	400	382	(1)	1029	1038	1029	640	515	410	1800
400X300	373	303	1130	1140	1130	705	400	382	1730	1130	1140	1130	705	400	382	(1)	1130	1140	1130	705	515	410	2100
400X350	373	322	1130	1140	1130	700	402	440	1700	1130	1140	1130	705	402	440	(1)	1130	1140	1130	705	520	445	2000
450X400	423	373	1219	1232	1219	790	439	442	2440	1219	1232	1219	785	439	442	(1)	1219	1232	1219	785	536	463	2837
500X400	471	373	1321	1333	1321	790	439	442	2875	1321	1333	1321	855	439	442	(1)	1321	1333	1321	855	536	463	3515
500X450	471	423	1321	1333	1321	855	480	485	3250	1321	1333	1321	855	480	485	(1)	1321	1333	1321	855	580	485	3875
600X500	570	471	1549	1568	1549	1040	534	500	5400	1549	1568	1549	1040	534	500	(1)	1549	1568	1549	1040	629	604	5395
750X600	712	570	1880	1902	1880	1230	608	632	8700	1880	1902	1880	1230	608	632	(1)	1880	1902	1880	1230	640	665	9000
900X750	855	712	2286	2315	2286	1460	729	784	15350	2286	2315	2286	1460	729	784	(1)	2286	2315	2286	1460	777	795	15235

Note:
(1) Please consult the factory.
For end flange dimensions please refer to ASME B16.5.
Dimensions C, D, E and weights are subject to change without notice.
Weights listed are relevant to side entry flanged end forged valves, please consult the factory for weights of other type of valves.



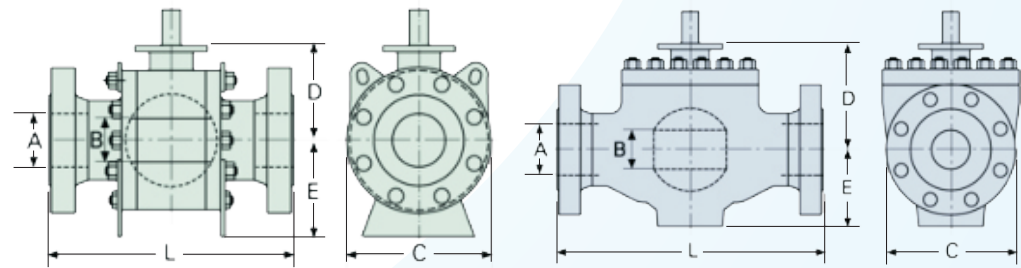
CLASS 1500 FULL BORE																														
ALL TYPES		SIDE ENTRY								WELDED BODY								TOP-ENTRY												
SIZE mm	A	B	L-RF	L-RTJ	L-WE	C	D	E	WEIGHT kg	L-RF	L-RTJ	L-WE	C	D	E	WEIGHT kg	L-RF	L-RTJ	L-WE	C	D	E	WEIGHT kg	L-RF	L-RTJ	L-WE	C	D	E	WEIGHT kg
50	49	49	368	371	368	216	106	104	50	368	371	368	216	106	104	(1)	368	371	368	216	212	87	56							
80	74	74	470	473	470	267	167	128	97	470	473	470	267	167	128	(1)	470	473	470	267	236	118	153							
100	100	100	546	549	546	311	179	170	198	546	549	546	311	179	170	(1)	546	549	546	311	294	150	278							
150	144	144	705	711	705	394	260	233	480	705	711	705	394	260	233	(1)	705	711	705	394	303	236	600							
200	192	192	832	841	832	483	304	290	820	832	841	832	483	304	290	(1)	832	841	832	483	354	285	1100							
250	239	239	991	1000	991	585	363	352	1500	991	1000	991	585	363	352	(1)	991	1000	991	585	398	333	1438							
300	287	287	1130	1146	1130	709	417	425	2250	1130	1146	1130	709	417	425	(1)	1130	1146	1130	709	520	427	2017							
350	315	315	1257	1276	1257	765	437	426	2850	1257	1276	1257	765	437	426	(1)	1257	1276	1257	765	550	456	2612							
400	360	360	1384	1407	1384	848	475	493	4070	1384	1407	1384	848	475	493	(1)	1384	1407	1384	848	565	487	3890							
450	405	405	1477	1499	1537	980	563	608	6195	N/A	N/A	N/A	N/A	N/A	N/A	(1)	1477	1499	1537	980	592	527	5100							
500	455	455	1664	1686	1664	1015	617	645	9075	N/A	N/A	N/A	N/A	N/A	N/A	(1)	1664	1686	1664	1015	650	630	6678							
600	530	530	1782	1810	2043	1293	698	724	14280	N/A	N/A	N/A	N/A	N/A	N/A	(1)	1782	1810	2043	1293	660	640	11700							

Note:
(1) Please consult the factory.
For end flange dimensions please refer to ASME B16.5.
Dimensions C, D, E and weights are subject to change without notice.
Weights listed are relevant to side entry flanged end forged valves, please consult the factory for weights of other type of valves.



CLASS 1500 REDUCED BORE																														
ALL TYPES		SIDE ENTRY								WELDED BODY								TOP-ENTRY												
SIZE mm	A	B	L-RF	L-RTJ	L-WE	C	D	E	WEIGHT kg	L-RF	L-RTJ	L-WE	C	D	E	WEIGHT kg	L-RF	L-RTJ	L-WE	C	D	E	WEIGHT kg	L-RF	L-RTJ	L-WE	C	D	E	WEIGHT kg
50X40	49	38	368	371	368	216	104	103	41	368	371	368	216	104	103	(1)	368	371	368	216	211	80	50							
80X50	74	49	470	473	470	267	104	103	68	470	473	470	267	104	103	(1)	470	473	470	267	211	80	98							
100X80	100	74	546	549	546	311	166	128	122	546	549	546	311	166	128	(1)	546	549	546	311	236	118	203							
150X100	144	100	705	711	705	394	213	168	285	705	711	705	394	213	168	(1)	705	711	705	394	287	153	376							
200X150	192	144	832	841	832	483	265	229	566	832	841	832	483	265	229	(1)	832	841	832	483	303	236	703							
250X200	239	192	991	1000	991	585	297	287	1022	991	1000	991	585	297	287	(1)	991	1000	991	585	349	285	1273							
300X250	287	239	1130	1146	1130	675	360	347	1760	1130	1146	1130	675	360	347	(1)	1130	1146	1130	675	404	330	1535							
350X250	315	239	1257	1276	1257	750	360	347	2145	1257	1276	1257	750	360	347	(1)	1257	1276	1257	750	404	330	2100							
350X300	315	287	1257	1276	1257	750	424	422	2500	1257	1276	1257	750	424	422	(1)	1257	1276	1257	750	530	427	2698							
400X300	360	287	1384	1407	1384	825	424	422	2800	1384	1407	1384	825	424	422	(1)	1384	1407	1384	825	530	427	3200							
400X350	360	315	1384	1407	1384	825	443	428	3245	1384	1407	1384	825	443	428	(1)	1384	1407	1384	825	540	455	3100							
450X400	405	360	1477	1499	1537	916	484	502	4970	N/A	N/A	N/A	N/A	N/A	N/A	(1)	1477	1499	1537	916	557	493	4200							
500X400	455	360	1664	1686	1664	985	484	502	5135	N/A	N/A	N/A	N/A	N/A	N/A	(1)	1664	1686	1664	985	557	493	4500							
500X450	455	405	1664	1686	1664	985	555	603	7500	N/A	N/A	N/A	N/A	N/A	N/A	(1)	1664	1686	1664	985	593	527	5900							
600X500	530	455	1782	1810	2043	1170	624	643	10875	N/A	N/A	N/A	N/A	N/A	N/A	(1)	1782	1810	2043	1170	657	620	9200							

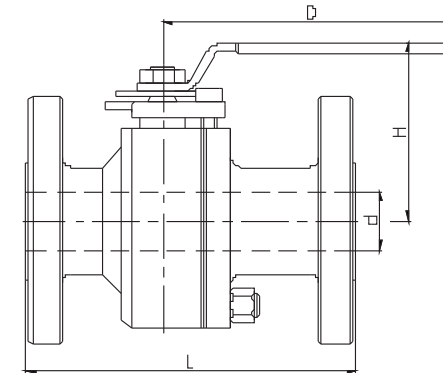
Note:
(1) Please consult the factory.
For end flange dimensions please refer to ASME B16.5.
Dimensions C, D, E and weights are subject to change without notice.
Weights listed are relevant to side entry flanged end forged valves, please consult the factory for weights of other type of valves.



CLASS 2500 FULL BORE																
ALL TYPES			SIDE ENTRY							TOP-ENTRY						
SIZE mm	A	B	L-RF	L-RTJ	L-WE	C	D	E	WEIGHT kg	L-RF	L-RTJ	L-WE	C	D	E	WEIGHT kg
50	42	42	451	454	451	235	120	127	88	451	454	451	235	212	98	120
80	62	62	578	584	578	305	177	198	187	578	584	578	319	243	122	246
100	87	87	673	683	673	356	227	233	380	673	683	673	364	299	164	470
150	131	131	914	927	914	483	264	252	770	914	927	914	483	355	243	937
200	179	179	1022	1038	1022	620	383	339	1357	1022	1038	1022	550	424	292	1410
250	223	223	1270	1292	1270	745	453	422	2100	1270	1292	1270	675	503	352	2600
300	265	265	1422	1445	1422	870	520	482	3210	1422	1445	1422	765	588	436	4200

CLASS 2500 REDUCED BORE																
ALL TYPES			SIDE ENTRY							TOP-ENTRY						
SIZE mm	A	B	L-RF	L-RTJ	L-WE	C	D	E	WEIGHT kg	L-RF	L-RTJ	L-WE	C	D	E	WEIGHT kg
50X40	42	38	451	454	451	235	120	127	65	451	454	451	240	212	98	80
80X50	62	42	578	584	578	305	120	127	155	578	584	578	305	212	98	160
100X80	87	62	673	683	673	356	177	198	264	673	683	673	356	243	122	300
150X100	131	87	914	927	914	483	227	233	510	914	927	914	483	299	164	670
200X150	179	131	1022	1038	1022	550	264	252	1090	1022	1038	1022	550	355	243	1150
250X200	223	179	1270	1292	1270	675	383	339	1663	1270	1292	1270	675	424	292	2100
300X250	265	223	1422	1445	1422	760	520	482	2555	1422	1445	1422	760	503	352	3300

Note:
For end flange dimensions please refer to ASME B16.5.
Dimensions C, D, E and weights are subject to change without notice.
Weights listed are relevant to side entry flanged end forged valves, please consult the factory for weights of other type of valves.



DIMENSIONS & WEIGHTS

FLOATING BALL VALVE

ASME CLASS 150 FULL PORT (mm)

NPS	1/2"	3/4"	1"	1-1/2"	2"	2-1/2"	3"	4"	5"	6"	8"
d	13	19	25	38	49	62	74	100	125	150	201
L-RF	108	117	127	163	178	190	203	229	356	394	457
H	63	75	95	115	120	155	165	200	220	295	355
D	130	130	160	230	230	400	400	650	1050	1050	1410
Wt(kg)	3	4	6.5	9	12	18	25	36	62	75	120

ASME CLASS 300 FULL PORT (mm)

NPS	1/2"	3/4"	1"	1-1/2"	2"	2-1/2"	3"	4"	5"	6"	8"
d	13	19	25	38	49	62	74	100	125	150	201
L-RF	140	152	165	191	216	241	283	305	381	403	502
H	63	75	95	115	120	155	165	200	220	295	355
D	130	130	160	230	230	400	400	650	1050	1050	1410
Wt(kg)	3.5	5	7	11	15	25	40	45	75	115	160

ASME CLASS 600 FULL PORT (mm)

NPS	1/2"	3/4"	1"	1-1/2"
d	13	19	25	38
L-RF	165	190	216	241
H	105	108	130	135
D	160	160	230	230
Wt(kg)	4	7	10	15

ASME CLASS 900/1500 FULL PORT (mm)

NPS	1/2"	3/4"	1"	1-1/2"
d	13	19	25	38
L-RF	165	229	254	305
H	105	115	122	157
D	160	230	230	400
Wt(kg)	15	11	22	25

Note:

For end flange dimensions please refer to ASME B16.5.

Dimensions D, H and weights are subject to change without notice.

Please consult the factory for dimensions of reduced port valves and other end type valves.

Weights listed are for forged body valves,

please consult the factory for weights of cast body valves.