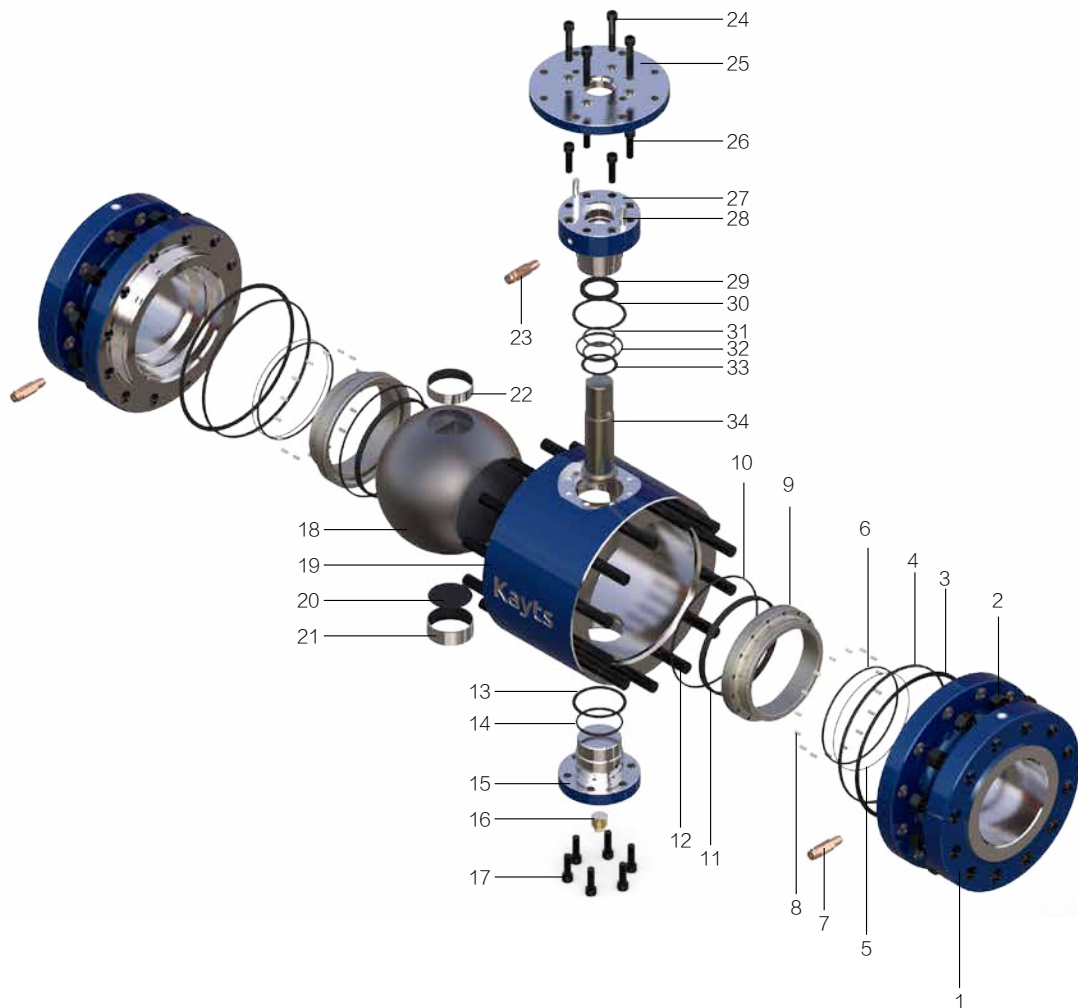


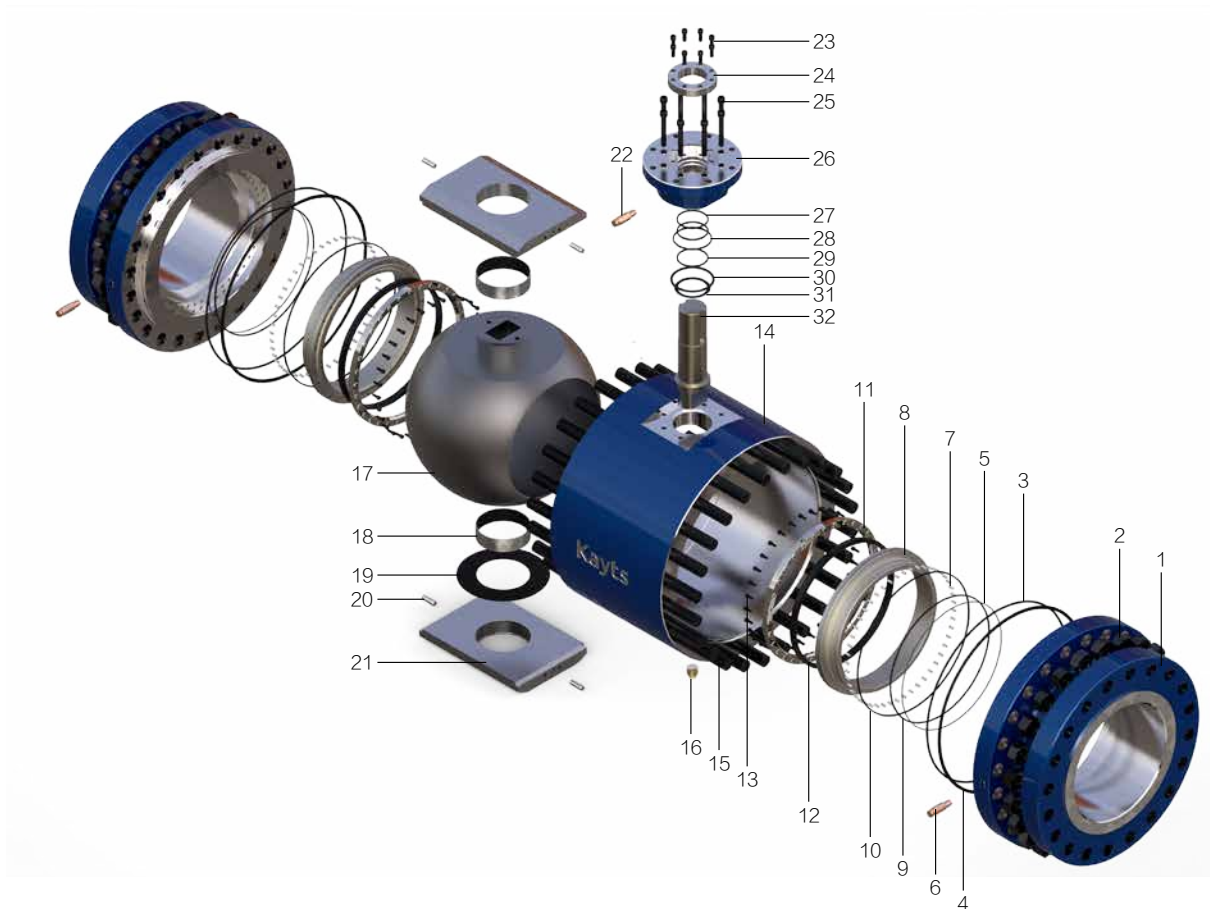
Construction of trunnion mounted ball valve (4" 300# and below)



**Part name**

- 1: Bonnet 2: Nut 3: Body gasket 4: O-ring 5: O-ring 6: O-ring 7: Sealant injection for seat 8: Seat spring 9: Seat ring 10: Fire safe packing for seat 11: Seat insert 12: Bolt 13: Gasket for lower cover 14: O-ring 15: Lower cover 16: Drain plug 17: Screw 18: Ball 19: Body 20: Thrust bearing 21: Slide bearing 22: Slide bearing 23: Sealant injection for stem 24: Screw 25: ISO 5211 mounting pad 26: Screw 27: Stem housing 28: Pin 29: Stem packing 30: Gasket 31: O-ring 32: O-ring 33: Thrust bearing 34: Stem

Construction of trunnion mounted ball valve (supporting plate type, 4" 600# & 6" 150# and above)



Part name

1: Bonnet 2: Nut 3: O-ring 4: Body gasket 5: O-ring 6: Sealant injection for seat 7: Seat spring 8: Seat ring 9: O-ring 10: Fire safe packing for seat 11: Pressing ring for seat insert 12: Seat insert 13: Screw 14: Body 15: Nut 16: Drain plug 17: Ball 18: Slide bearing 19: Thrust bearing for ball 20: Pin 21: Supporting plate 22: Sealant injection for stem 23: Screw 24: Pressing ring for stem packing 25: Screw 26: Stem housing 27: Stem packing 28: Gasket for stem housing 29: O-ring 30: Gasket for stem housing 31: Thrust bearing 32: Stem