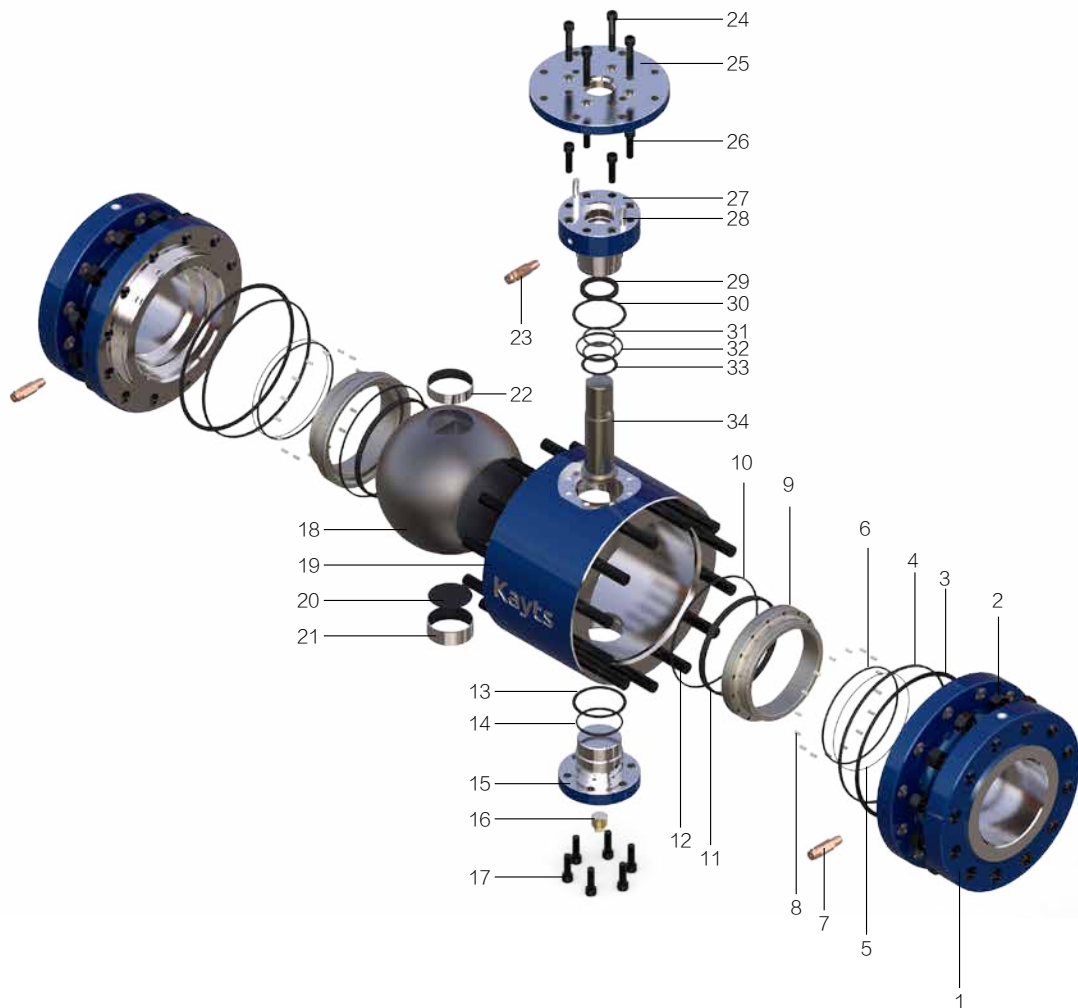


Construction of trunnion mounted ball valve (4" 300# and below)



Part name

- 1: Bonnet 2: Nut 3: Body gasket 4: O-ring 5: O-ring 6: O-ring 7: Sealant injection for seat 8: Seat spring 9: Seat ring 10: Fire safe packing for seat 11: Seat insert 12: Bolt 13: Gasket for lower cover 14: O-ring 15: Lower cover 16: Drain plug 17: Screw 18: Ball 19: Body 20: Thrust bearing 21: Slide bearing 22: Slide bearing 23: Sealant injection for stem 24: Screw 25: ISO 5211 mounting pad 26: Screw 27: Stem housing 28: Pin 29: Stem packing 30: Gasket 31: O-ring 32: O-ring 33: Thrust bearing 34: Stem